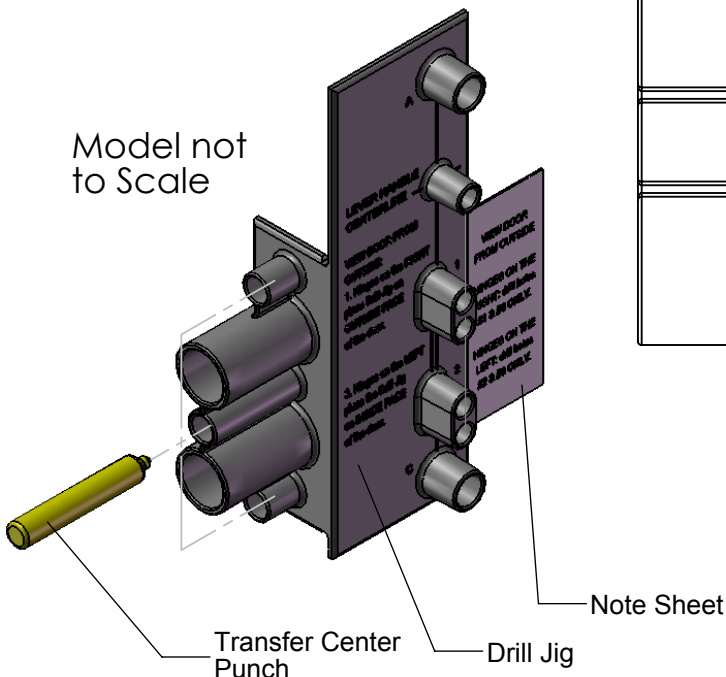
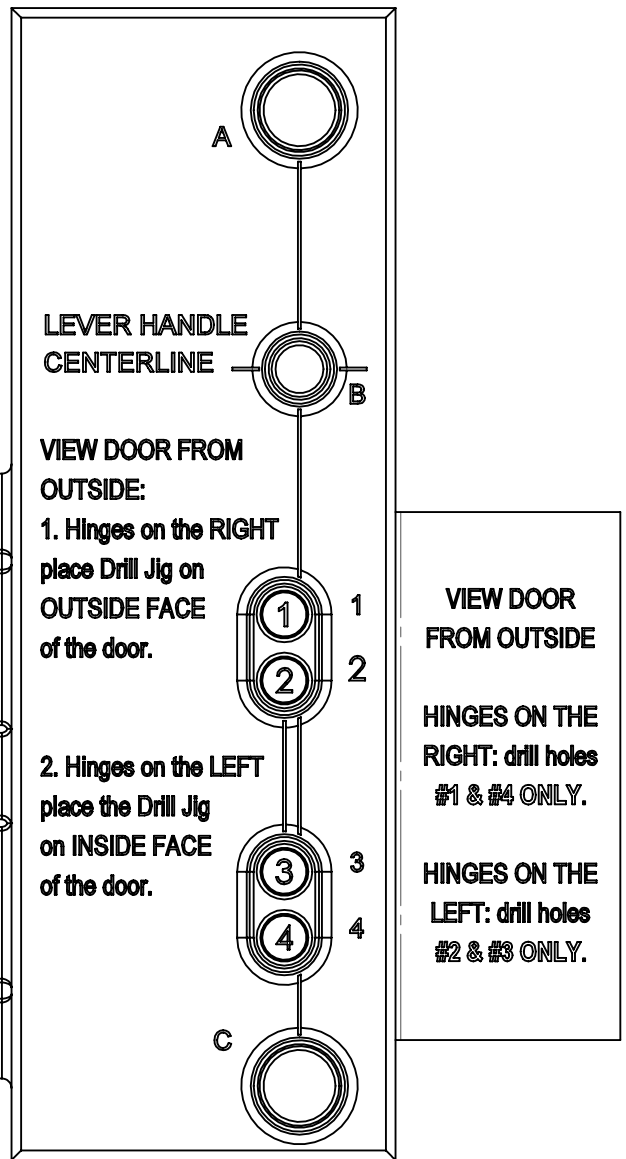


Cylindrical Latch Door Preparation

- 1. View door from the outside.** If the hinges are on the RIGHT; place drill jig on OUTSIDE door face with the drill jig surface with the 5/8" diameter bosses against the door edge. If the hinges are on the LEFT; place drill jig on INSIDE door face with the drill jig surface with 5/8" diameter bosses against the door edge.
- Position the drill jig "LEVER HANDLE CENTERLINE" (Hole "B") at the height you want the latch lever and draw a line above and below the drill jig surface with the 5/8" diameter bosses on the door edge. Remove drill jig.
(CAUTION: CHECK FOR INTERFERENCE BETWEEN INSIDE SCREEN DOOR LATCH ASSEMBLY AND PRIME DOOR OUTSIDE LATCH ASSEMBLY. THE INSIDE ESCUTCHEON PLATE ON THE INSIDE SCREEN DOOR LATCH ASSEMBLY EXTENDS SLIGHTLY BEYOND THE LARGE SURFACE OF THE DRILL JIG. Adjust drill jig and redraw lines if necessary to eliminate interference).
- Mortise door edge between lines to 0.100 inch depth. **(NOTE: Mortise plate is 0.100 inches thick.)**
- Reposition drill jig on door with the surface with the 5/8" diameter bosses in the mortise cut made in Step 3 and the large flat surface against the OUTSIDE or INSIDE door face. Insert the Transfer Center Punch provided in the screw pack with the point end toward the door edge and lightly tap with hammer to mark centers for (3) 3/32" diameter pilot holes for # 6 screws.

NOTE: Care must be taken to drill all holes perpendicular to the door surfaces.

- Remove the drill jig and drill (3) 3/32" diameter pilot holes one inch deep on the center marks made in Step 4.
- Attach drill jig to door edge with (2) #6 screws in top and bottom countersink holes.
- Using 5/8" diameter drill jig bosses as guides, drill (2) 5/8" diameter holes 2-3/4" deep in door edge.
- Using 3/8" diameter drill jig bosses as guides, drill (2) 3/8" diameter holes (A & C) completely through door face.
- Using 1/4" diameter drill jig bosses as guides, drill (1) 1/4" diameter hole (B) and (2) 1/4" diameter numbered holes - hole numbers 1 & 4 on RIGHT-HAND or hole numbers 2 & 3 on LEFT-HAND doors completely through door face (See note on sheet attached to Drill Jig). Remove #6 screws and aside drill jig.
- Using 1" diameter hole saw enlarge (1) hole B and (2) numbered holes to 1" diameter half-way through the door face from each side with hole saw .



CYLINDRICAL LATCH INSTALLATION INSTRUCTIONS

Tools required: Pencil, #2 Phillips Screw Driver, Drill, 3/32", 1/4", 3/8", & 5/8" Drill Bits, 1" Hole Saw, Wood Chisel, and Hammer.

Compare the contents of the kit with Figure 1 to familiarize yourself with the parts and to verify that all parts have been included.

NOTE: Do NOT insert key in key cylinder until Step 10.

ITEM NO.	DESCRIPTION	QTY.
1	INSIDE LATCH ASSEMBLY	1
2	LIVEBOLT ASSEMBLY	1
3	DEADBOLT ASSEMBLY	1
4	OUTSIDE LATCH ASSEMBLY	1
5	LARGE SQUARE SPINDLE	1
6	SMALL SQUARE SPINDLE	1
7	MORTISE PLATE	1
8	LATCH STRIKE	1
9	#8-32 X 1 5/8" PHIL OVAL MS	2
10	#6 X 1" PHIL FLAT SMS	6
11	KEY	2

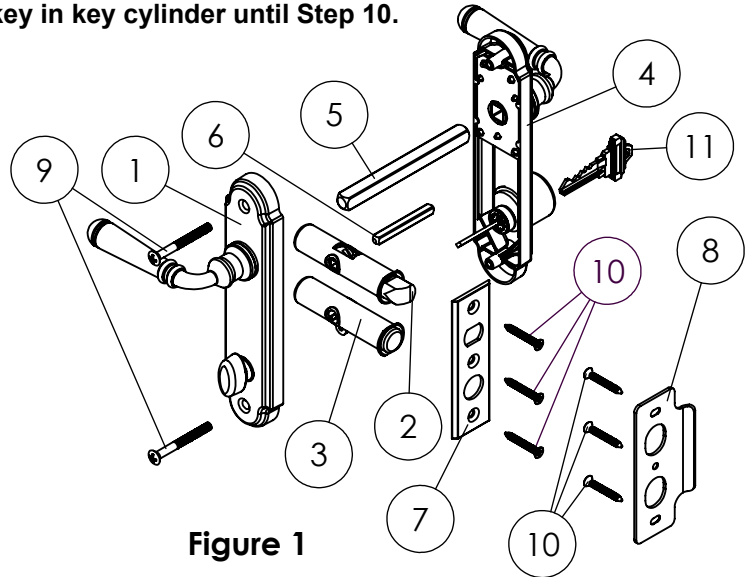


Figure 1

WARNING: DO NOT USE POWER SCREW DRIVERS TO TIGHTEN THE SCREWS. WARRANTY WILL BE VOIDED IF OVER TIGHTENED, STRIPPED THREADS, OR BROKEN SCREWS RESULT FROM THE USE OF POWER SCREW DRIVERS.

Step 1. Complete door preparation as described on [CYLINDRICAL LATCH DOOR PREPARATION](#) sheet included.

Step 2. Insert **LIVEBOLT ASSEMBLY** into upper 5/8" diameter hole in edge of door with the curved surface of the livebolt toward the inside of the door and the flat surfaces on the livebolt housing flange horizontal. See Figure 2.

Step 3. Insert **DEADBOLT ASSEMBLY** into lower 5/8" diameter hole in edge of door. Viewing the door from outside; if the hinges are on your right the cutout in the deadbolt housing must face down, if the hinges are on your left the cutout in the deadbolt housing must face up. The flat surfaces on the deadbolt housing flange must be horizontal. See Figure 2.

Step 4. Insert **SMALL SQUARE SPINDLE** in the square hole in the **LIVEBOLT ASSEMBLY** with the end of the spindle approximately flush with the outside surface of the door. See Figure 3.

NOTE: See Figure 4 for exploded view of components relative to door for completing Step 5 through Step 9.

Step 5. Hold the **INSIDE LATCH ASSEMBLY** with the mounting surface toward the inside of the door and the thumb turn below the lever handle. Rotate the lever handle to point toward the hinges and insert the **LARGE SQUARE SPINDLE** completely into the **INSIDE LATCH ASSEMBLY**.

Step 6. Position **INSIDE LATCH ASSEMBLY** toward inside of the door with the top mounting boss in the top drilled hole and the **LARGE SQUARE SPINDLE** through the top 1" diameter hole. Grasp the **SMALL SQUARE SPINDLE** on the outside surface of the door and rotate it to completely extend the livebolt and push the **SMALL SQUARE SPINDLE** into the square recess in the center of the **INSIDE LATCH ASSEMBLY**. Push and hold the **INSIDE LATCH ASSEMBLY** against the inside surface of the door. Insert the (2) **#8-32 PHIL OVAL MS screw** approximately one-half way into the holes in the **INSIDE LATCH ASSEMBLY**.

Step 7. Position the **OUTSIDE LATCH ASSEMBLY** with the mounting surface toward the door and with the key cylinder down and start the **LARGE SQUARE SPINDLE** into the large square recess. Align and insert the small rectangular spindle on the key cylinder through the rectangular slot in the **DEADBOLT ASSEMBLY**. Rotate the outside lever handle to point toward the hinges and slide the **OUTSIDE LATCH ASSEMBLY** toward the outside door surface while holding the **INSIDE LATCH ASSEMBLY** tight against the inside door surface. It may be necessary to rotate the thumb turn back and forth to engage the small rectangular spindle and allow the **OUTSIDE LATCH ASSEMBLY** to contact the outside door surface.

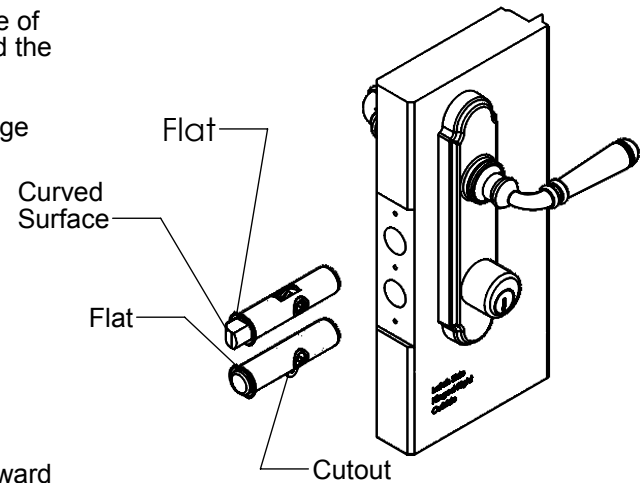


Figure 2

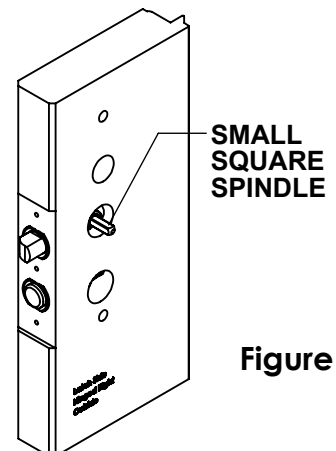


Figure 3

Step 8. Loosely tighten the (2) **#8-32 PHIL OVAL MS screws** attaching the **INSIDE & OUTSIDE LATCH ASSEMBLIES**.

Step 9. Attach the **MORTISE PLATE** to the edge of the door with (3) **#6 X 1" SMS screws**. Loosely tighten the (3) screws in this step. Note: The flat surfaces on the livebolt and deadbolt housing flanges must be in the counter bores in the **MORTISE PLATE**.

Step 10. Cycle the **LIVEBOLT ASSEMBLY** with the lever handles and the **DEADBOLT ASSEMBLY** with the thumb turn and the **KEY** to check for proper function. Move the **INSIDE & OUTSIDE LATCH ASSEMBLIES** as needed and securely tighten the (2) **#8-32 PHIL OVAL MS screws**. Securely tighten the (3) **#6 X 1" SMS** in the **MORTISE PLATE** installed in step 9.

Step 11. Note: This step is performed standing outside the door with the door closed. Draw a horizontal line on the door frame aligned with the top of the **MORTISE PLATE**. This line will be used in Step 13 to locate top position of **LATCH STRIKE**. See Figure 5.

Step 12. Note: This step is performed standing outside the door. Place the **LATCH STRIKE** with the flange facing toward the outside door surface and away from the edge of the door over the livebolt. Hold the **LATCH STRIKE** in place and close the door. Hold the **LATCH STRIKE** vertical and push it toward the inside of the door and draw a vertical line on the underside of the flange on the **LATCH STRIKE** along the edge of the door frame. Continue to hold the **LATCH STRIKE** vertical and pull it away from the inside of the door and draw a second line on the flange on the **LATCH STRIKE** along the edge of the door frame. Note: These two lines drawn on the **LATCH STRIKE** will be parallel and approximately 1/8" apart. See Figure 6.

Step 13. Open the door and remove the **LATCH STRIKE** from the livebolt. Block the door open. Place the **LATCH STRIKE** on the door frame with the flange facing toward the outside door surface and away from the edge of the door. Align the top edge of the **LATCH STRIKE** with the horizontal line on the door frame and midway between the two vertical lines you made on the **LATCH STRIKE** in the previous step. Outline the cutouts for the top and bottom screw slots and the ovals for the livebolt and deadbolt. See Figure 7.

Step 14. Drill (2) 3/32" diameter pilot holes a minimum of one inch deep in the center of each screw slot. Saw (2) 3/4" diameter clearance holes a minimum of one-half inch deep for the livebolt and deadbolt.

Step 15. Attach the **LATCH STRIKE** using (2) **#6 X 1" PHIL FLAT SMS screws**. Tighten the screw to hold the **LATCH STRIKE** in place but allow you to move it in or out. Adjust the **LATCH STRIKE** in or out for proper function. Verify function by cycling the **LIVEBOLT ASSEMBLY** with the lever handles and the **DEADBOLT ASSEMBLY** with the thumb turn and the **KEY** to check for proper function.

Step 16. Drill (1) 3/32" diameter pilot hole a minimum of one inch deep in the center of the center screw hole in the **LATCH STRIKE**. Secure **LATCH STRIKE** with remaining **#6 X 1" PHIL FLAT SMS screw**.

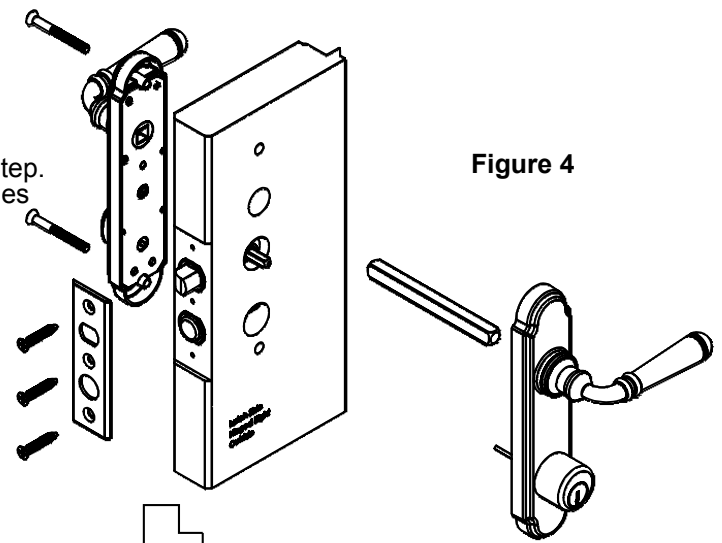


Figure 4

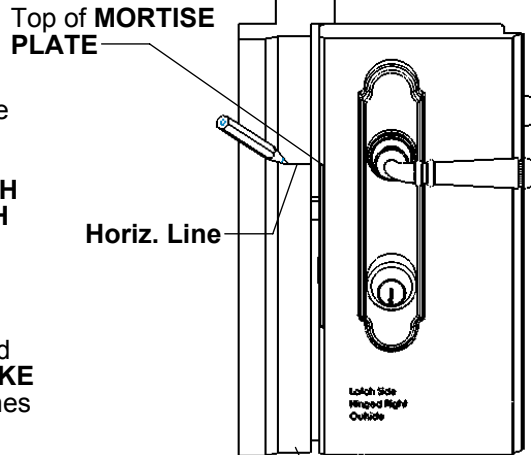


Figure 5

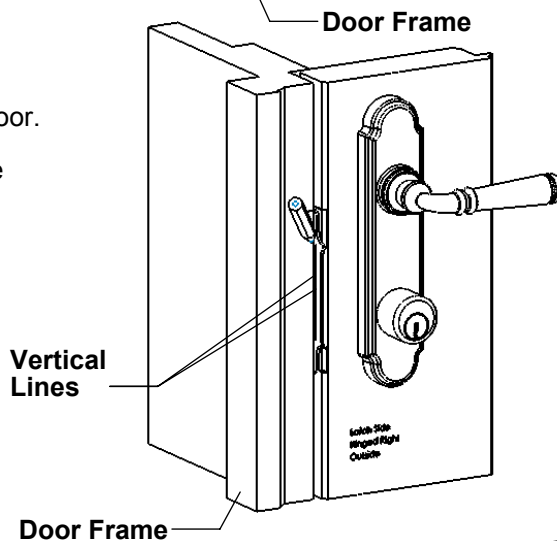


Figure 6

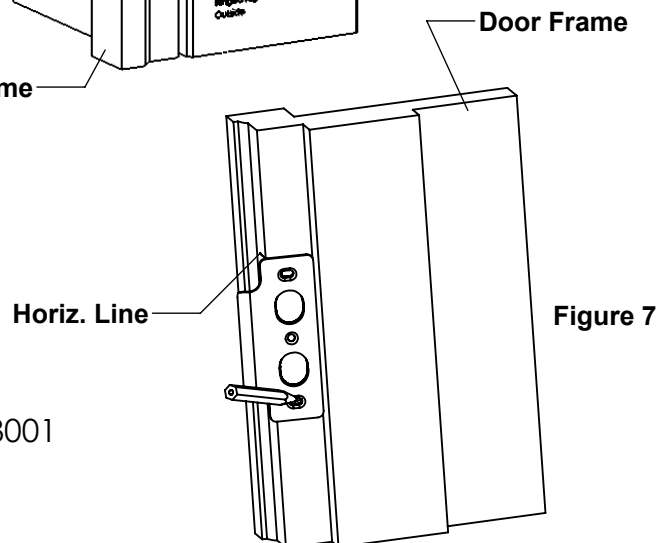


Figure 7