

The LS-RDJ comes standard with the following features:

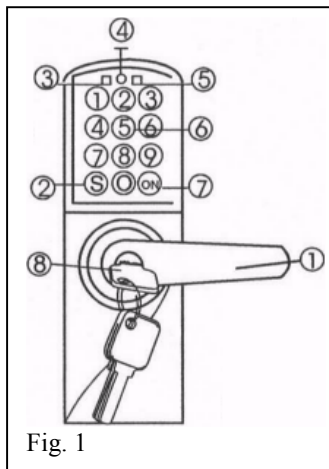
- 1 unique master code
- 9 unique user codes
- Low Battery Alarm
- External power capability
- Manual override keys
- Tamper-proof error function
- Easy installation

1. INSTALLATION

1.1 Lock Diagram

Below is a diagram of the LS-RDJ with numbers indicating areas of function. These numbers correspond with their description in the box below:

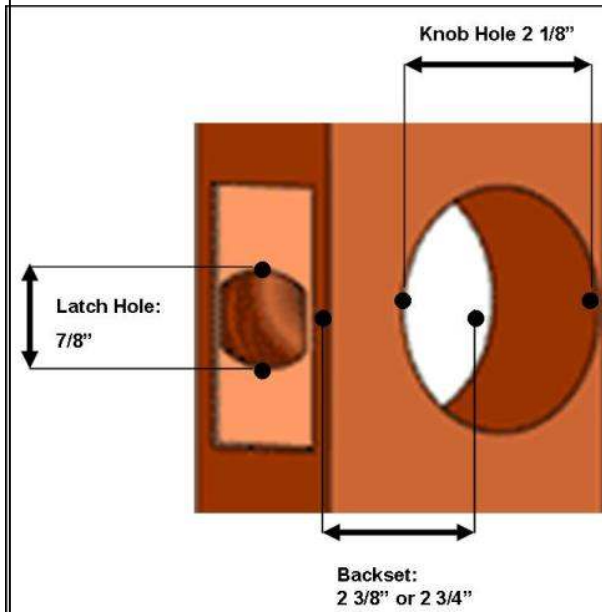
- ① Handle (Left handle or Right handle)
- ② "S" key (setup key) for setting new codes
- ③ Green light indicating the lock is open
- ④ Socket for external power (6V)
- ⑤ Red light indicating the lock is not open
- ⑥ Digital keypad (digits 0-9)
- ⑦ "ON" key used for unlocking the lock
- ⑧ Emergency manual keys



1.2 Door Diagram

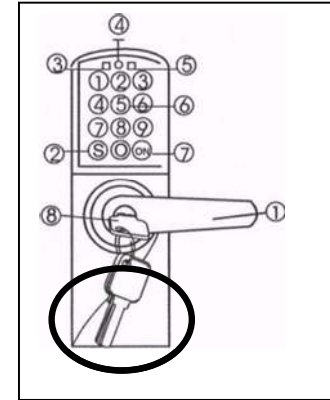
If you are installing the LS-RDJ in a door with pre-drilled holes, the lock will fit most standard doors. To confirm that the lock will fit your door, please verify the following measurements:

1. Backset is either 2 3/4" or 2 3/8"
(backset is the measure from the edge of the door to the center of the knob hole)
2. Door knob hole is 2 1/8"
3. Latch Hole is 7/8"
(see figure below)

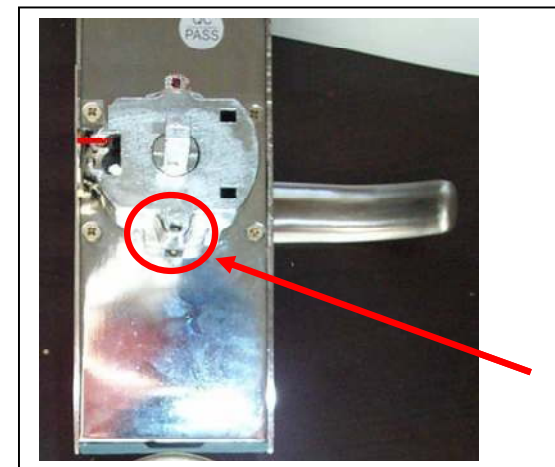


1.3 Installing the Batteries

The battery case is located in the lower half of the outside lock piece.



Remove the battery case by inserting the small green screw driver through the bottom hole of the back side of the front mount (see below). As you press the screw driver through the hole the case will release from the bottom of the mount. Place 4 AA batteries in the case and replace the case in the mount.



1.4 Installing the Lock

Place the latch through the latch hole positioned correctly for latching your door. Leave the latch loose until both the front and rear mounts are installed.

Place the front mount rubber gasket over the side of the mount that will touch the door.

Place the front mount through the knob hole while sliding the latch through the groove in the mount. (see below).



When the front mount is in place, hold the back mount rubber gasket against the back side of the door and place the back mount over the gasket and onto the stem protruding from the front mount.

Secure the back mount to the front mount with the screws provided. Ensure that the lock is on straight and then screw the remaining screw directly into the door. When the lock is completely attached, screw the latch into the side of the door.

2. PROGRAMMING

The LS-RDJ electronic code lock is designed with 2 types of entry codes that will open the lock:

- 1 Master Code and
- 9 User Codes

The master code can open the lock but is also used to create, change and cancel user codes. Each of the 9 available user codes can open the lock. Both the master code and the user codes can be made up of 1 to 13 digits.

It is important to note that the master code **MUST** start with the digit "0". **The factory preset master code is "0123"**.

Similarly, each of the user codes can only start with one of the remaining 9 digits. That is, there can be only one code that begins with the digit "1", only one code that begins with the digit "2" and so on up to the digit "9".

2.1 Setting & Changing the Master Code

To change the master code, enter the existing master code (initially "0123" from the factory) and press the "ON" button. You will here a beep after which you can enter a new master code and then press the "S" button. **Remember, the master code MUST begin with the digit "0"**. Your new master code has now been saved in the lock.

2.2 Setting & Changing the User Codes

To create a user code, enter the existing master code (initially "0123" from the factory) and press the "ON" button. You will here a beep after which you can enter a new user code and then press the "S" button. **Remember, user codes can NOT start with the digit "0"**. Your new user code has now been saved in the lock.

There are two ways to change an existing user code. You can change user codes by using the master code or by using the user code that you would like to change.

To change a user code using the master code, enter the existing master code (initially "0123" from the factory) and press the "ON" button. You will here a beep after which you can change a user code to a new code that begins with the same digit as the user code you want to change. After entering the new code press the "S" button. **Remember, user codes can NOT start with the digit "0"**. Your user code has now been changed in the lock.

To change a user code using the user code, enter the existing user code and press the "ON" button. You will here a beep after which you can change the user code to a new code that begins with the same digit as the old user code. After entering the new code press the "S" button. **Remember, user codes can NOT start with the digit "0" and can only begin with the same digit as the old user code.** Your user code has now been changed in the lock.

2.3 Canceling and Resetting Codes

In order to cancel ALL existing user codes, enter the existing master code and then press the "ON" button. After you hear a beep press the digits "0000" and then press the "S" button. All user codes will then be canceled.

If you need to reset the master code but you have forgotten the existing master code, remove the back mount from the door and find a small hole at the top of the door facing side of the back mount. Insert the small green screw driver (or any small screw driver) into this hole and the master code will be reset to the factory default of "0123".

3. OPENING THE LOCK

There are two ways to open the LS-RDJ. You can open the lock by entering either a master code or a user code on the keypad, or you can open the lock with one of the manual override keys.

3.1 Opening the lock with a User Code or a Master Code

To open the lock using either a user code or a master code, enter the code on the keypad and press the "ON" button. You will hear a beep during which the door will be unlocked and you can enter by turning the door handle downward.

3.2 Opening the lock with an Override Key

To open the lock using an override key, first remove the small 1/4" cylindrical metal cap in the center of the door handle. This cap can be removed with the magnet that is supplied with the lock. To remove the cap, place the magnet on the cap and pull back. The cap will

release from the door handle exposing the keyhole underneath. If you have lost the magnet, any other magnet will remove the cap. Alternatively, any small screw driver can be used to pop the cap from the handle. After the cap is removed, insert the key in the keyhole and turn to release the locking mechanism. The handle will now turn and open the door.

4. KEEPING THE LOCK POWERED

The lock comes with a warning system when the batteries are running out of power. If the battery power is low the lock will sound a series of beeps each time a code is used notifying the user that it is time to change the batteries. The lock will continue to function for about 10 days (depending on usage) after this warning is sounded.

If the battery power has completely run out and you do not have a manual override key, the lock can be powered from the outside using any power source with a 6V output. To power the lock remove the small plastic cap that covers the hole at the top of the center of the outside mount. Insert an adapter into this hole and the lock will power up.