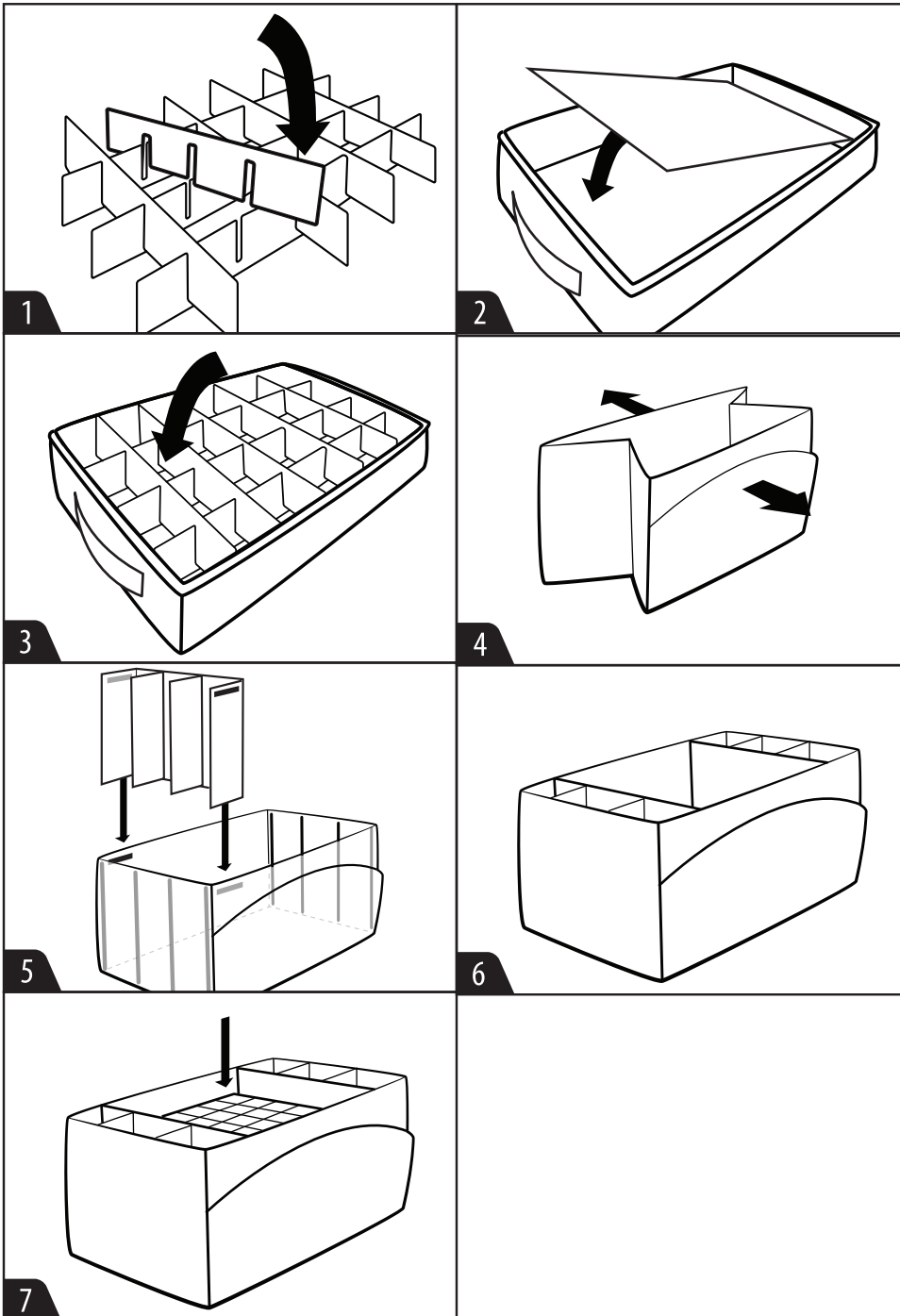




ORNAMENT KEEPER *with* SIDE POCKETS INSTRUCTIONS

DO NOT RETURN TO VENDOR.

For assistance with assembly including instructional videos, parts and customer service visit www.TreeKeeperBags.com



1. Assemble the tray structure by crossing the long sections with the short sections inserting them in the slots on each piece as shown. Do this for each three tray structures.
2. Unfold and expand the tray and insert the tray base into each tray as shown.
3. Insert each assembled tray structure into each tray.
4. Next, expand the storage bag by pulling the front and back in opposite directions.
5. Insert the side pocket dividers as shown. Make sure to attach the four Velcro strips on the dividers with the Velcro strips along the inside of the storage bag as shown.
6. With your trays built and your side pocket dividers installed you are now ready to proceed.
7. You are now ready to store your ornaments in the trays and then place the trays on top of one another in the center section of the bag as shown. You may also store your larger ornaments or decor in the side pockets as well as a tree skirt, lights or other decor in the front pocket.