

# MOUNTING HARDWARE FOR EXTERIOR SHUTTERS

## How to Choose Correct Shutter Hardware

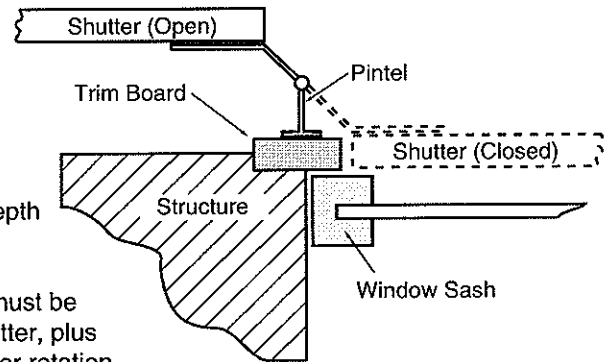
### Terminology

- **Pintel** - The male part of the hinge set that attaches to the house.
- **Strap** - The female part of the hinge set that attaches to the shutter.
- **Siding Material** - The siding material that is used on the house i.e. brick, plank, stucco.
- **Return Depth** - The distance in inches, from the window or window molding to the outer edge of the siding material.
- **Pintel Offset** - The distance in inches, between the plate that screws to the house and the pin that the strap sits on.
- **Strap Offset** - The distance in inches, from the pintel pin to the inner part of the strap when in the open position.
- **Hinge Throw** - The pintel offset plus the strap offset. The distance needed for the shutter to clear the siding material when in the open position.

### Questions that must be answered.

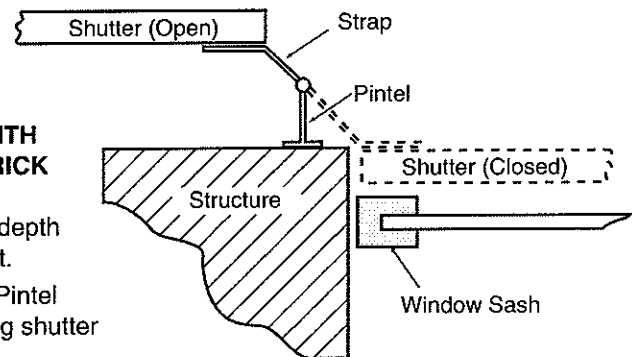
- What type of siding is on the house around the window? Ex. Brick, stucco, stone, plank, vinyl...
- What type of molding (180 brick mold, 1x4 flat mold etc...) is around the window or does the siding material butt up to the window with no molding at all?
- What is the return depth in inches, from the outside edge of the trim board to the face of the sash itself?
- How deep is the pocket or frame the shutter will close into.
- Where will the pintel be placed?

**INSIDE MOUNT ON WINDOW TRIMMED**  
with wood or composite trim or brickmold/trim with appropriate depth for shutter pocket.



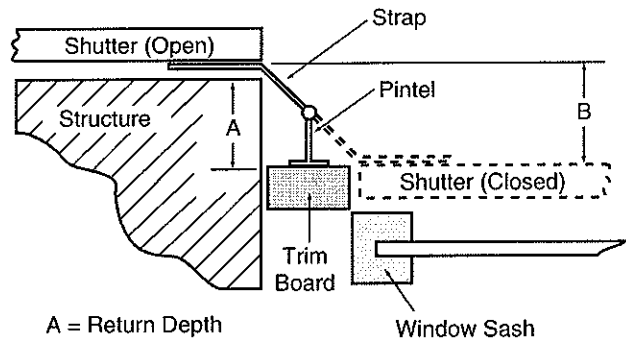
Note: Trim board must be as thick as the shutter, plus clearance for shutter rotation.

**INSIDE MOUNT DIRECTLY TO STRUCTURE WITH NO TRIM OR BRICK MOLD CASING**  
with appropriate depth for shutter pocket.



Note: Strap and Pintel are equal allowing shutter to close flush.

**INSIDE MOUNT WITH TRIM OR CASING**  
Allowing for closure inside window trim or brickmold and throwing out and around brick facing



A = Return Depth  
B = Hinge Throw

**OUTSIDE MOUNT WITH NO TRIM OR CASING**  
with Little or No Depth for Shutter Pocket

